



SIMEITE INTERNATIONAL LIMITED

斯麦特国际贸易公司

www.globalequipments.com

QTZ80/45 Dual-use machine (Tower Crane with Concrete Pump)





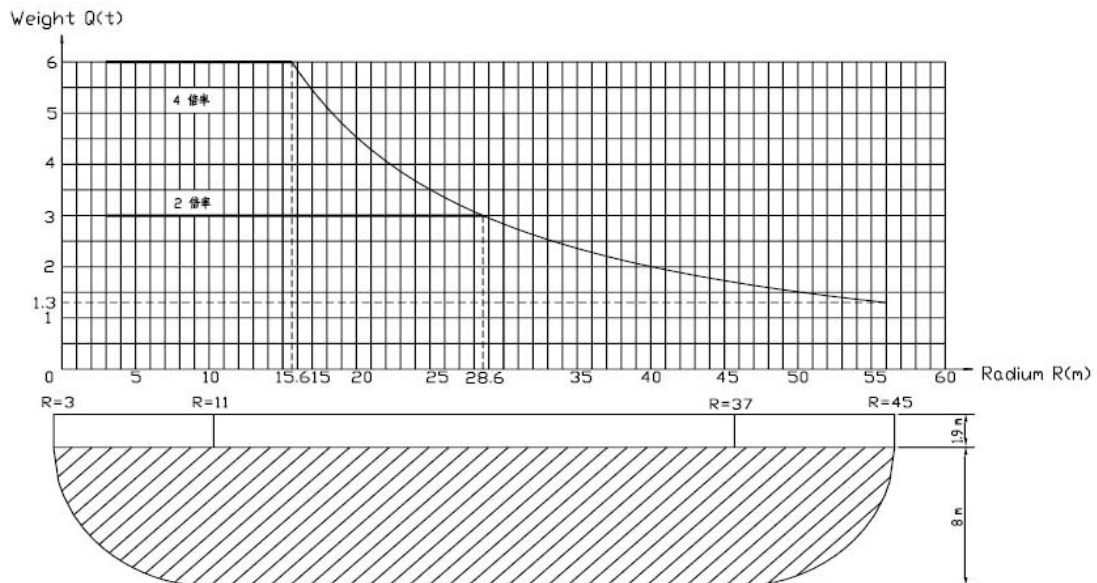
SIMEITE INTERNATIONAL LIMITED

斯麦特国际贸易公司

www.globalequipments.com



Lifting performance curve





SIMEITE INTERNATIONAL LIMITED

斯麦特国际贸易公司

www.globalequipments.com

QTZ80/45 dual-use tower crane lifting fabric characteristics:

- New combination of design, changes in the structure to become part of lifting, the fabric of dual-use tower crane.
- Superior performance of the stepless speed regulating agencies.
Double drawbars static set of rigid structure Boom, the largest of 56 m.
- Unique hoisting rope sag limiter to ensure that the boom rotating through the performance, for domestic first.
- Automatically hook conversion rate, the auxiliary operations quickly and easily.
- new concept of closed-end still inline with the sliding roof or roof beam or system design, a fundamental solution to the high drop tower and the safety issues, give you a completely assured.
- Unique structure of the plate connected to greatly shorten the manufacturing process line, the cost has doubled decline in strength and intensity substantial increase in welding.
- Accurate positioning of the body movement limit.
- High precision and high repeat accuracy of torque limiter, from the weight limitation.
- Performance over most of the national standard.



SIMEITE INTERNATIONAL LIMITED

斯麦特国际贸易公司

www.globalequipments.com

Specification

item		Unit	parameters	
			2 ratio	4ratio
Loading lift moment		kN.m	800	
The Max. work range	Lifting range	m	56	
			45	
Rated lifting weight	R=3~12.1	t	4	8
	R=12.1~56		4~1.3	8~1.3
Hoisting height	freestanding	m	45(inland area) 40(coastal area)	
	attaching		180	90
Work speed	Hoisting mechanism	m/min	0~49	0~24.5
			1~4	0~80
	Tralleying mechanism	m/min	0~47.3	
	Slewing mechanism	r.p.m	0~0.7	
	Hoisting mechanism	m/min	0.5	
Weight	Frame	kg	46401	
	Mechanism		3125	
	Balance weight		15550	
Mast section(L*W*H)		1850*1850*2500(mm)		
The largest wind- level work		6 grade		